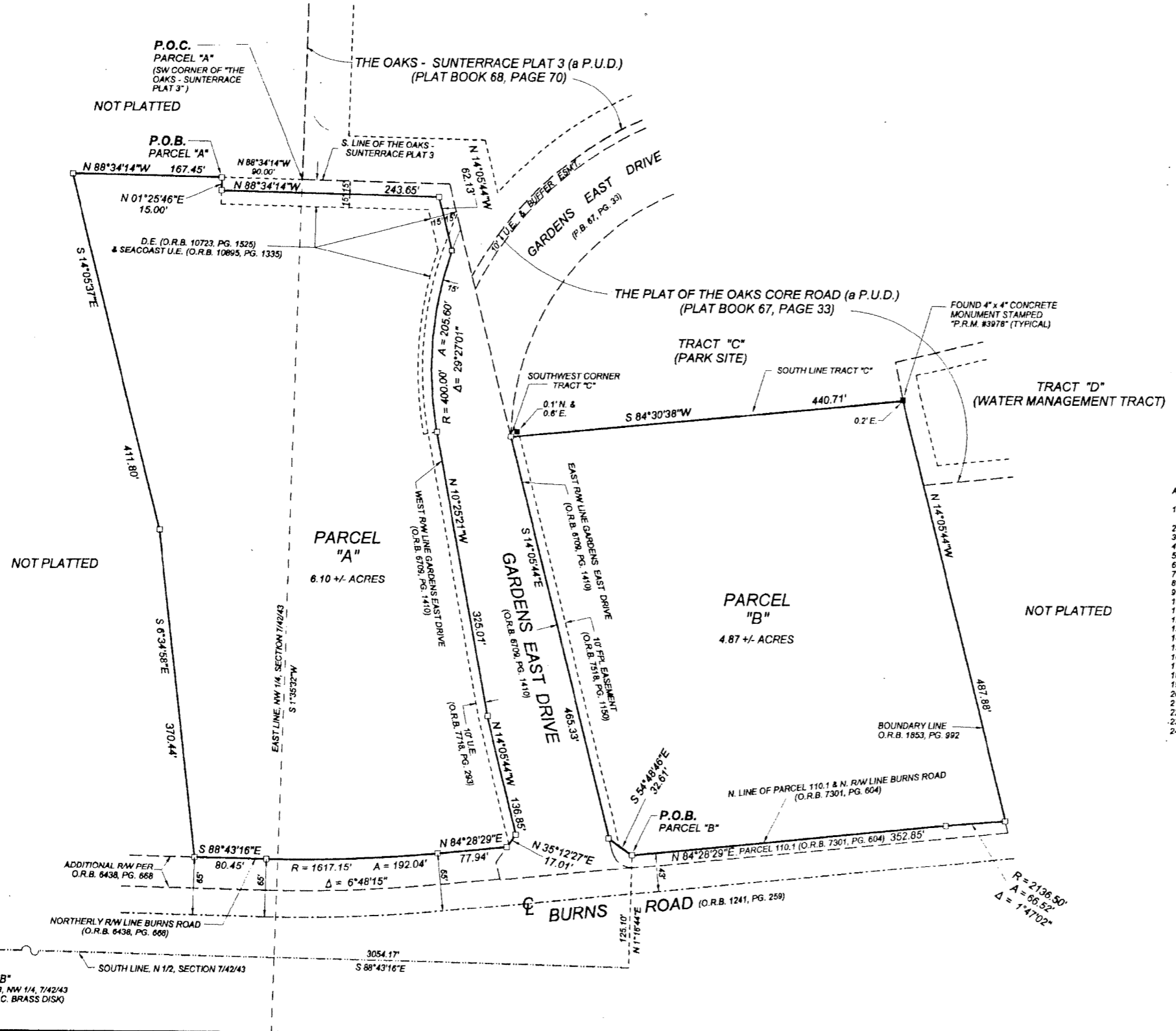


ST. MARKS EPISCOPAL CHURCH

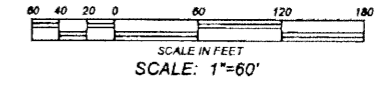
BEING A PORTION OF SECTION 7, TOWNSHIP 42 SOUTH,
AND RANGE 43 EAST, CITY OF PALM BEACH GARDENS,
PALM BEACH COUNTY, FLORIDA.
MAY, 2001

SHEET 2 OF 2



ABBREVIATIONS & SYMBOLS

1. □	Denotes Set Permanent Reference Monuments (P.R.M.'s) Stamped P.R.M. P.L.S. # 3357
2. C	Centerline
3. RW	Right of Way
4. P.B.	Plat Book
5. P.G. (S)	Pages
6. SEC.	Section
7. TWP.	Township
8. RGE.	Range
9. U.E.	Utility Easement
10. D.E.	Drainage Easement
11. D.B.	Deed Book
12. A	Arc Length
13. Δ	Central Angle
14. R	Radius
15. C.B.	Chord Bearing
16. O.R.B.	Official Record Book
17. R.P.B.	Road Plat Book
18. L.A.E.	Limited Access Easement
19. P.O.C.	Point of Commencement
20. P.O.B.	Point of Beginning
21. P.B.C.	Palm Beach County
22. FND.	Found
23. ESMT	Easement
24. Wty	Westerly



ST. MARKS
EPISCOPAL CHURCH

WALLACE SURVEYING
CORP. (INCORPORATED IN FLORIDA)

NO. 1000 UNIVERSITY PARKWAY, SUITE 111, WEST PALM BEACH, FLORIDA 33411-1000

FIELD:	JOB No 92-1322 "C"	F.B.:	PG
OFFICE R.C.:	DATE MAY, 2001	DWG No. 92-1322-1	
C'K'D.:	REF.	SHEET 2 OF 2	